

VENT SILENCER

“Effective | Widely Applicable | Trustworthy”

Vent silencers are designed to cut the noise generated by the vent from an elevated pressure to atmospheric pressure. The noise produced is a combination of ‘shock noise’ generated by the rapid reduction in pressure across the relief device and the noise created by the turbulent downstream flow.

Vent silencer consists of the expansion chamber with vent size inlet and expanded outlet. The vent steam/gas enters the inlet of the silencer and expands in series of chambers with deflected path and vents out through expanded outlet.

“HEARING PROTECTION IS EASY, HEARING IS PRICELESS”

APPLICATIONS: Vent silencers are used in areas where it is necessary:

- To reduce work place noise levels to a desired occupational limit.
- To cut the intrusion of industrial noise into residential areas.

Vent silencers are used to suppress the noise generated by safety relief valves, process vents, dumping gas to atmosphere during compressor or boiler set-up sequences, de-pressurizing lines for maintenance, ejector discharges and steam exhausts, and the blowdown of pipelines for cleaning purposes.

CONSTRUCTIONAL DETAIL:

Available Sizes:

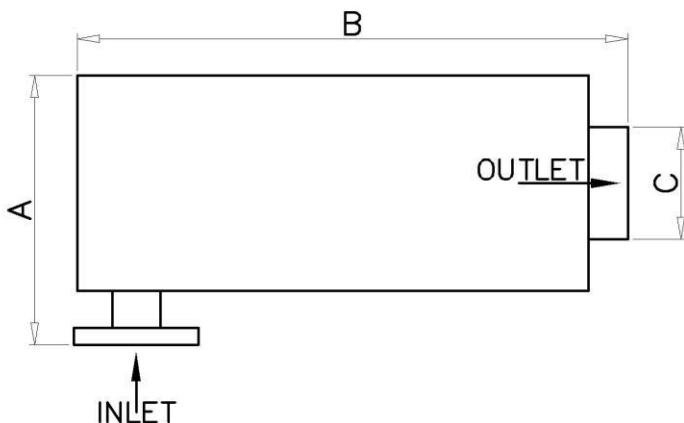
15NB TO 100NB, ASA 150# Available in both MS and SS Body construction. Other flange ratings can be provided on request.

Limiting Conditions: Max. Op. Pr. = 10 bar.

Max Op. Temp. = 180°C

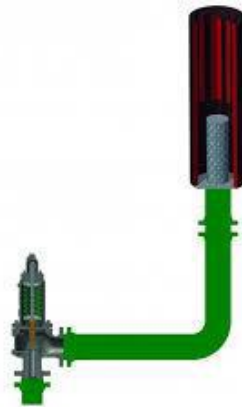
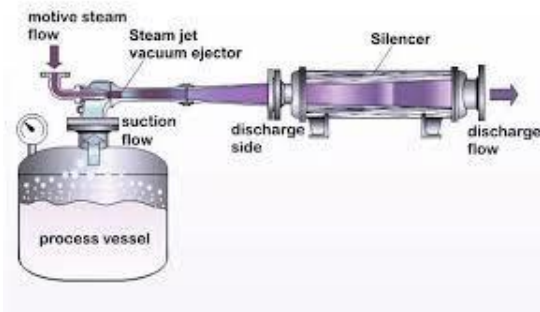
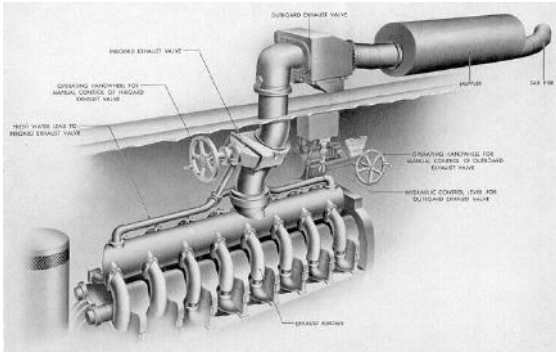
Where the standard range does not meet your requirements, special tailor-made designs can be offered.

Accessories: Common Header for Multi vent points, Flexible hose with Quick connection arrangement and Cone Strainer screen can be provided additional



INLET	A	B	C
15NB	140	225	40NB
25NB	190	380	80NB
40NB	270	550	100NB
50NB	335	700	150NB
80NB	480	1100	200NB
100NB	585	1350	250NB

DIFFERENT APPLICATIONS



SOME OTHER INDOANUSHKA RANGE OF PRODUCTS.

<ul style="list-style-type: none"> ▪ Double window sight glass (MULTIVIEW) 	<ul style="list-style-type: none"> ▪ Flash Vessel
<ul style="list-style-type: none"> ▪ Steam traps – thermodynamic type, float type, thermostatic type and inverted bucket type. 	<ul style="list-style-type: none"> ▪ Speciality strainers (MAINTENO) (Y-type with blowdown valve, T-type with online blowdown facility)
<ul style="list-style-type: none"> ▪ Steam injector (THERMOJECT) – for direct injection of steam 	<ul style="list-style-type: none"> ▪ Disc check type non return valve ▪ Moisture separators
<ul style="list-style-type: none"> ▪ MUTINY - Steam operated condensate return pumps ▪ Module hst ▪ Hot Water Generator ▪ MUTINY MINI – Steam operated condensate return pumps for small capacities. 	<ul style="list-style-type: none"> ▪ TRPS - Structure mounted flash recovery and condensate handling plants. ▪ PHE based hot water generators. ▪ Steam Trap Modules.

SOME OF OUR VALUED CUSTOMERS...

- | | | | |
|---|--|---|---|
| <ul style="list-style-type: none"> • I O CL- Vadodara / Barauni • Nagarjuna Fertilizer And Chemicals Limited • Gujarat State Fertilizers Corporation. • Sun Pharmaceutical Industries Limited • R P G Life Science Limited • Apollo Tyres Ltd • Heubach Colour Pvt.Ltd • Videocon Electronics Ltd | <ul style="list-style-type: none"> • Shree Swami Harigiri Paper Mills Ltd • Ajanta Paper & General Products Ltd • Anand Paper Mills Pvt Ltd • Narmada Textiles • Praful Exports Pvt Ltd • Jayant Oils & Derivatives Ltd • Sailani Agro Pvt Ltd • Sajjan India Ltd. | <ul style="list-style-type: none"> • Cadila Pharma Ltd • Glaxo Smithcline Ltd • Cadila Zydus Ltd • Danopharm Chemicals • Shiva Pharmachem Pvt. Ltd. • Ganesh Remedies • Farmson Analgesics • Shiva Pharmachem Ltd • Kgn Enterprises • UPL Group. • Solvey Speciality Chemicals pvt. Ltd. | <ul style="list-style-type: none"> • Loxim Industries Limited • Suyog Dye Chemie Pvt.Ltd • Huntsman Group • Bms Chemie • Chlora Tech Industries • Hari Orgochem Pvt Ltd • Industrial Solvents & Chemicals Pvt. Ltd • Sud-Chemie • Gujarat Organics Ltd. • Gulbrandson Chemicals Pvt Ltd |
|---|--|---|---|

And The List Is Growing.....